

## Artemia cysts

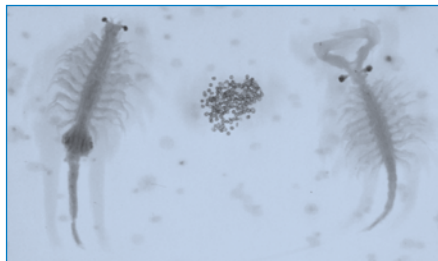
First feeding of fish larvae is crucial for the success of a hatchery. Survival and proper development of the larvae are dramatically influenced by the quality of the first feed.

The feed used has to be attractive to the fish larvae, it should be nutritionally balanced, it should be small enough so that larvae can ingest it and very important, larvae should be able to digest the feed. It is therefore that artemia nauplii are used by all hatcheries.

For first feeding marine larvae, a special grade of artemia is available, meeting the requirements of the delicate larvae. This grade, the high HUFA, is harvested from selected ponds, where adult artemia feed on special algae species ensuring a high level of (n-3) HUFA in the artemia cysts. The high HUFA artemia give the smallest possible nauplii.



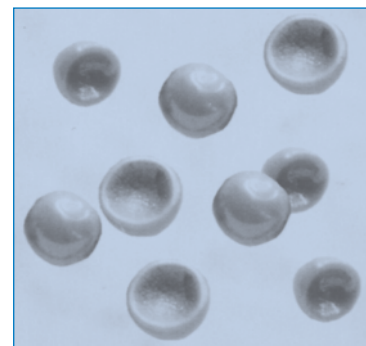
**Salt Lake AQUAFEED  
Premium**



**Artemia cysts Adult artemia**

Our enrichment grade artemia cysts are harvested mainly from the Great Salt Lake in Utah, USA. Cysts are cleaned and processed by state-of-the-art technology ensuring thus the highest possible quality. Every batch is tested for classification and retested at several stages.

Because of the unstable supply of artemia cysts from the Great Salt Lake in Utah in the past years, we have also artemia cysts available from alternative sources around the world. This enables us to have quality artemia cysts available all year round.



**cysts**